



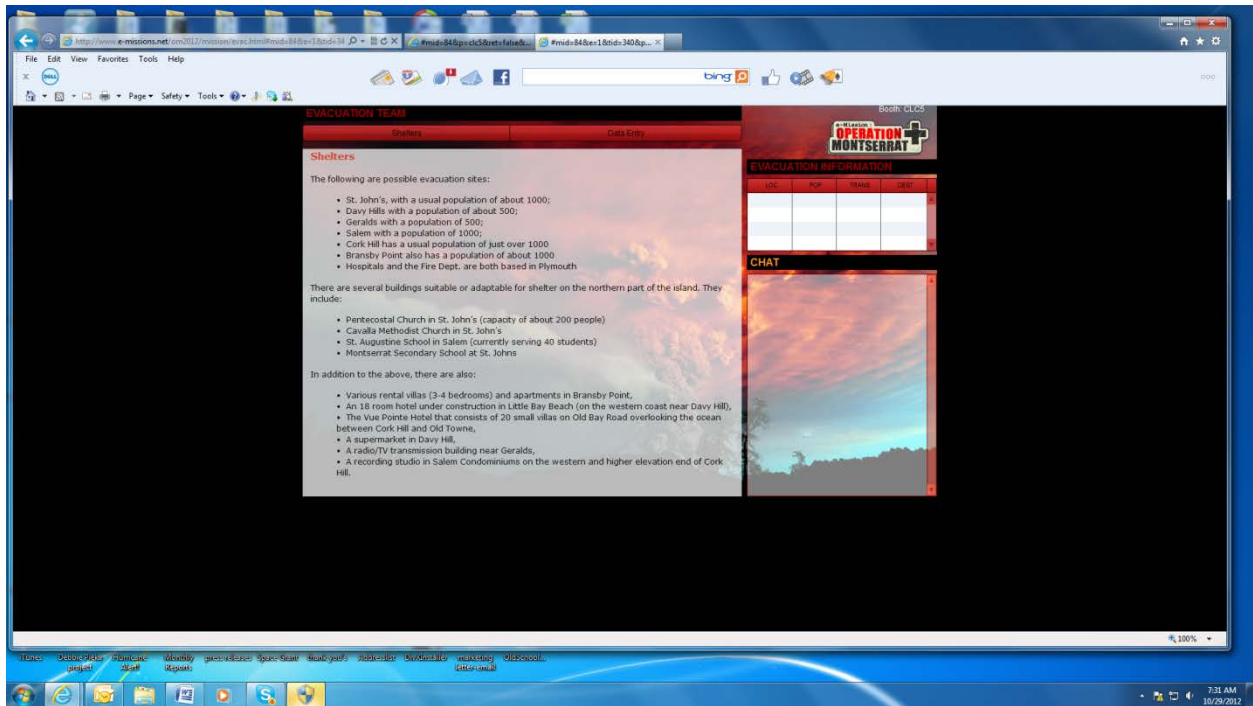
Evacuation Team Instructions for Interactive Maps

To access the computer interface for the Evacuation Team, go to:

www.e-missions.net/om2012/mission

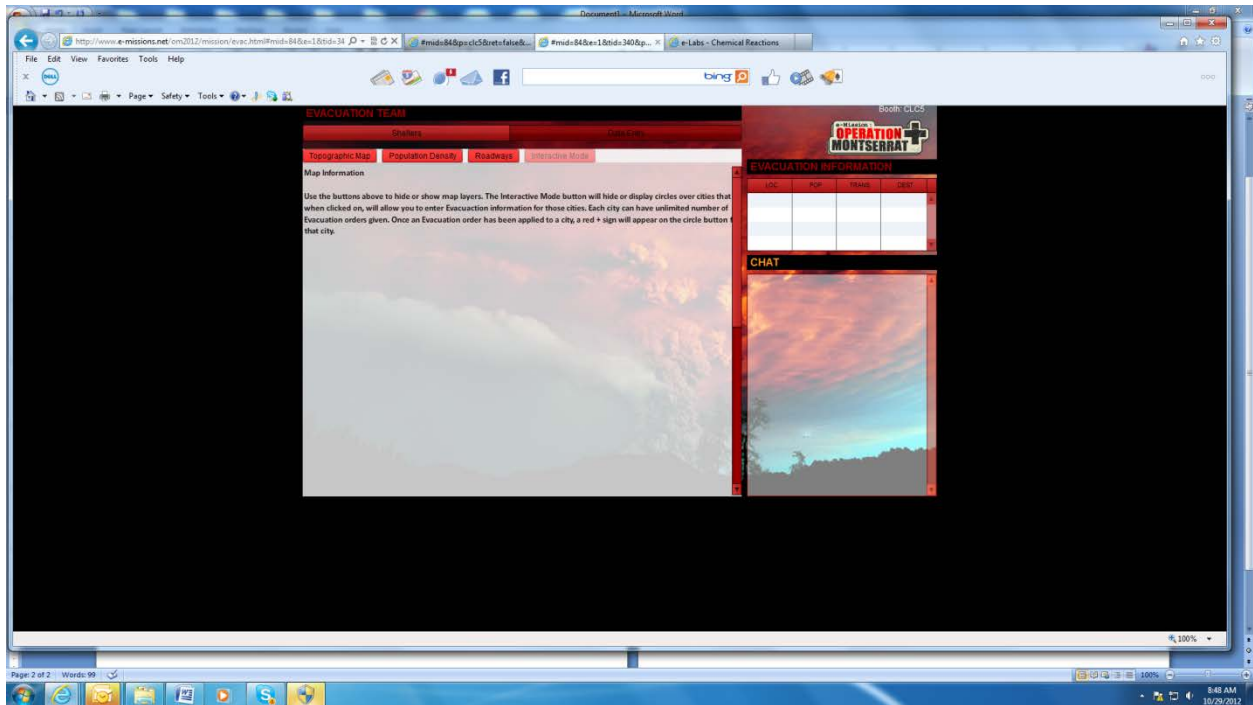
The Flight Director will give you the password for your mission.

The following screen will be displayed:



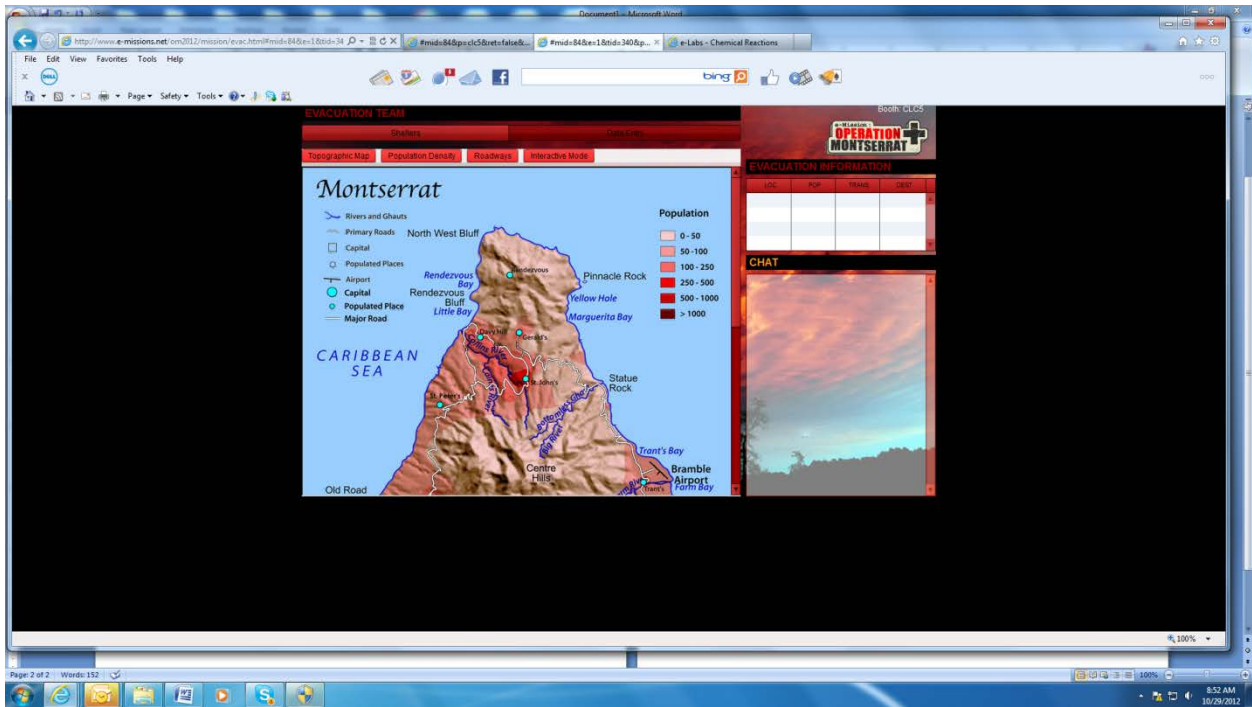
At the start of the mission, the list of Shelters will be displayed so that your team can determine places that are considered to be safe on Montserrat. Notice the top tabs "Shelters" and "Data Entry" allow you to switch views between two screens.

To enter into an 'interactive map mode', click on the "Data Entry" tab. The display screen will change as follows:

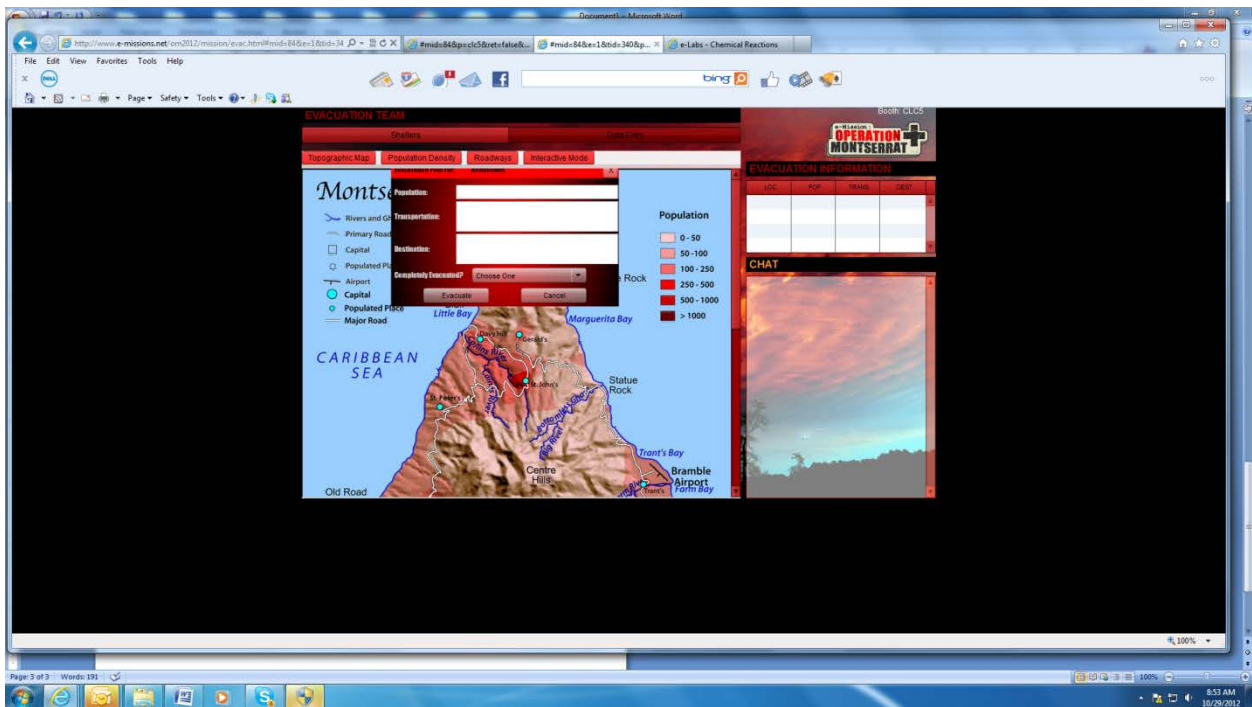


The Topographical, Population Density and Roadway tabs allow you to toggle between these three maps and will overlay them as well so that you can design the type of map you need. Data entry on those three maps is not available.

To enter data on your map, click on the "Interactive Mode" tab. The map screen will change and you will be able to see light blue circles on each town of Montserrat. See the example screen below:



To enter an evacuation order for any town, click on the light blue dot. The data entry screen will be displayed:



Enter the number of people you would like to evacuate; what mode of transportation you will use for the evacuations and the destination (or shelter location). You can indicate on this screen if the down is completely evacuated or not.

When you click on the “Evacuate” button, this information will be sent to all teams and Mission Control so that all are aware of your evacuation plans.

When you answer “yes” to the “Completely Evacuated?” question, the light blue dot will change to an “X” so that the interactive map can be used to indicate when evacuations are complete in any given town.

*****PLEASE NOTE*****

The chat window is VIEW ONLY which means you may not send messages to Mission Control or other teams; you can only read messages that have been sent to you. All communications from the Evacuation Team must be VERBAL; the Evacuation Team Lead needs to inform Mission Control of each evacuation and each recommendation verbally over the microphone.